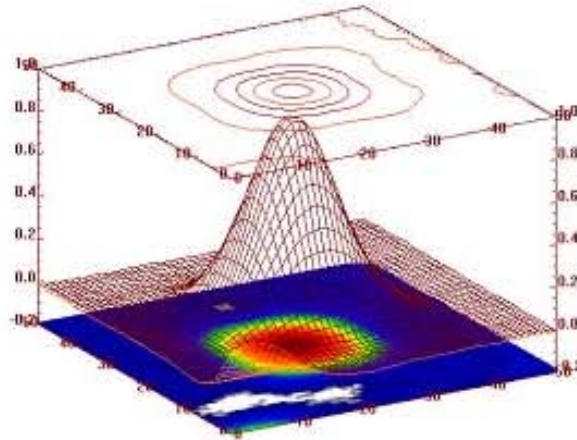
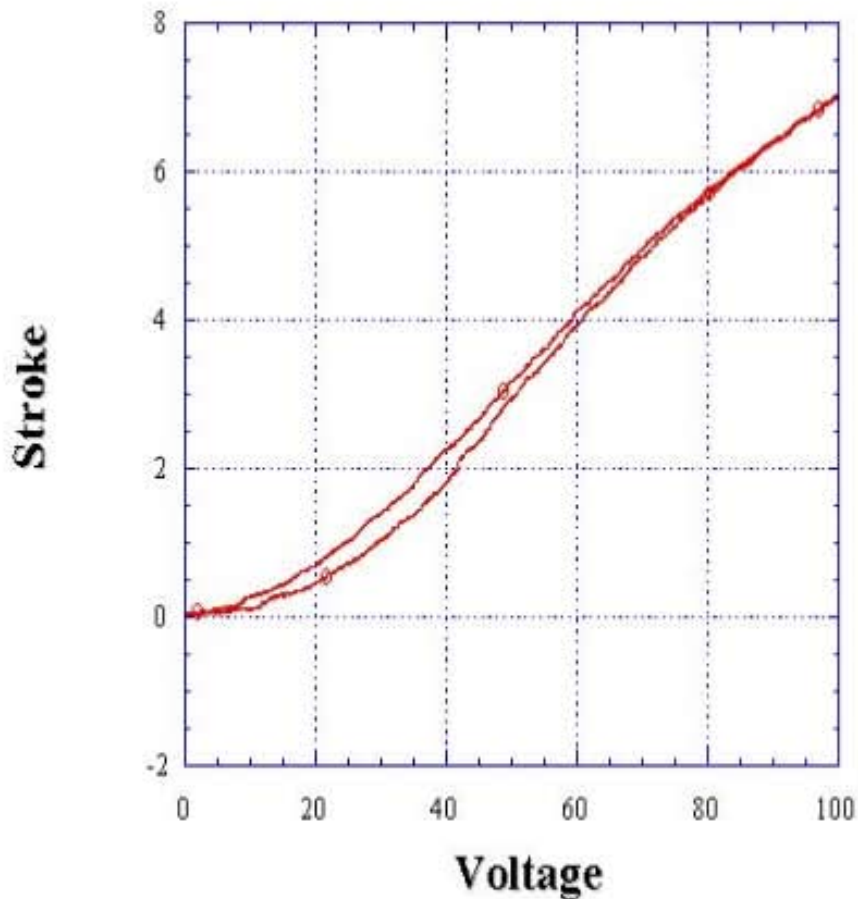


Properties: Deformable Mirrors



Deformable Mirror Influence Function

The influence function shape helps define the correctability of the mirror. Too small or too large and the correctability suffers. Mirror stiffness characteristics define the shape and value of the influence function. These generally remain constant across all mirrors unless certain characteristics are requested.



Xinetics actuators use PMN as the active material. This ceramic insures low hysteresis, negligible creep, high stiffness, and excellent uniformity and linearity.