

RE-Series Charts



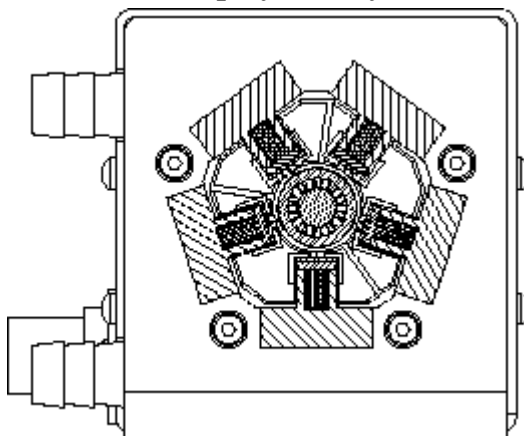
Product Overview

DPSS Nd:YAG Laser Modules

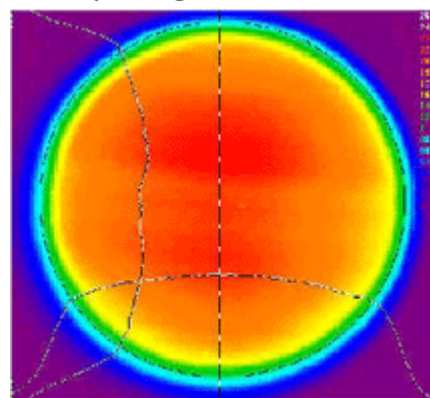
Product Definition

The RE Series is designed as a replacement/retrofit "engine" for existing high power arc lamp laser systems. It is an ideal DPSS OEM building block for the development or production of new state of the art 1 KW laser systems. The RE Series are highly reliable, sealed modules, which are extremely compact, rugged and efficient.

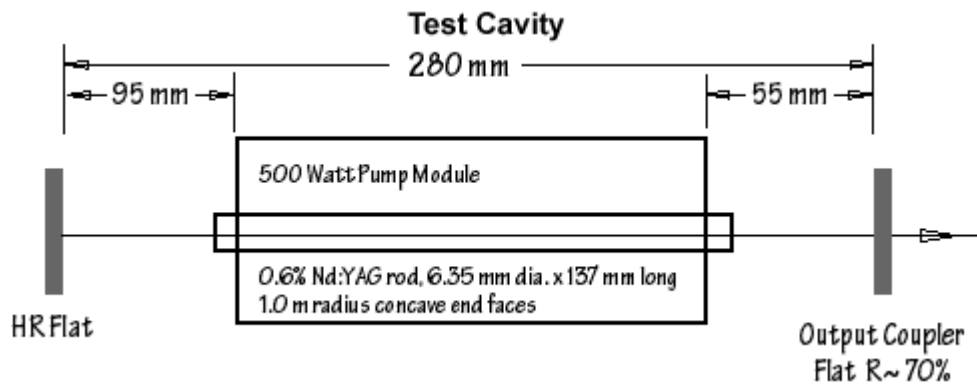
Pump Symmetry



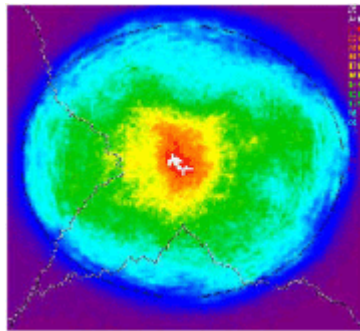
Relay Image of Fluorescence



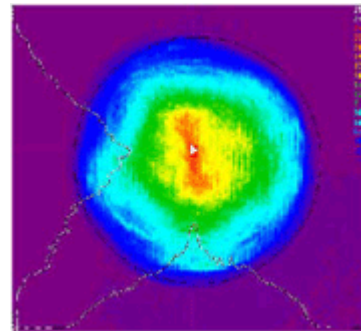
6.35mm, 0.6% Dopant Nd:YAG Rod
~5.9mm vertical x ~5.9mm horizontal



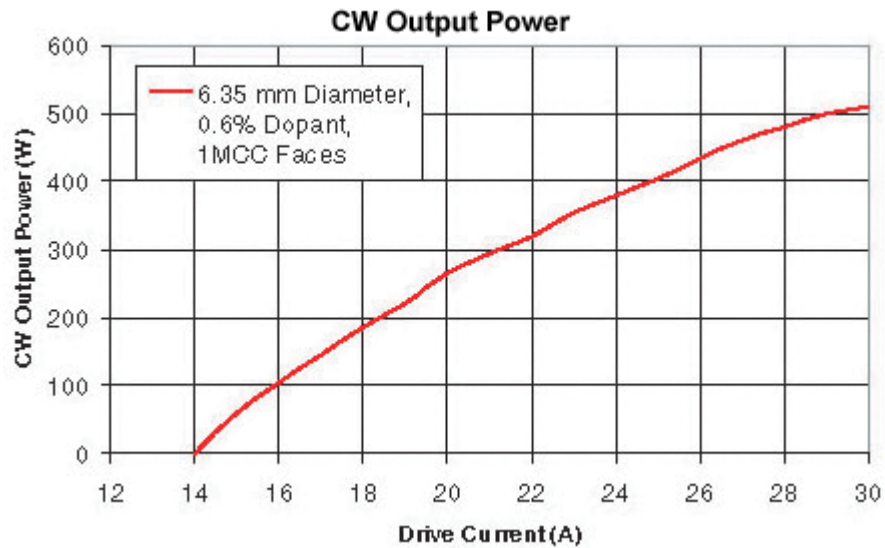
Short Cavity Configuration Beam Profiles



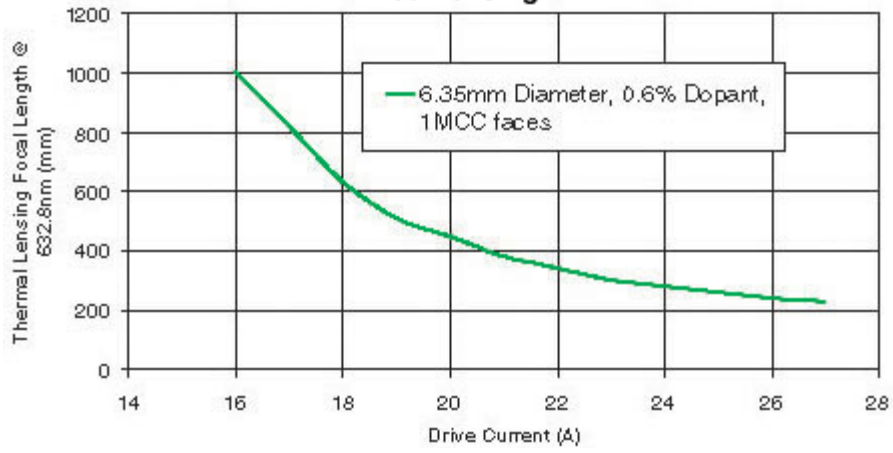
Near field Image 1:1 of Beam at OC
~5.5mm vertical x ~6.3mm horizontal



Far Field Image of Beam at focus of
+200mm focal length lens
~4.85mm vertical x ~4.92mm horizontal



Rod Lensing



Modeled Small Signal Gain

