

FIBER COUPLED ARRAYS

FEATURES AND BENEFITS



- High Brightness
- 0.22 NA
- Passively Cooled
- Long Lifetime, High Reliability

OPTIONS AVAILABLE

- Red Aiming Beam (3mW - 20mW)
- Monitoring Photodiode
- Thermistor (NTC - PT100)
- Intergrated TE Coolers

TECHNICAL SPECIFICATIONS

Parameter	Specifications	Units
CW Power Output	50 to 80	W
Center Wavelength	808, 915, 940, 976, 980, 1064, 1340, 1532	nm
Center Wavelength Tolerance	2 to 10	nm
Spectral Width (FWHM)	3 to 5	nm
Operating Temperature	15 to 35	°C
Wavelength Shift	0.3	nm/°C
Fiber Connector	SMA - 905	—
Fiber Core Diameter	400, 600, 800, 1000	µm
Fiber NA	0.22	—
Built-In Thermistor	NTC - 10kOhm -25 °C (Option: PT100)	—
Cooling	Conductive (through bottom surface)	—
Electro-Optical Efficiency	Up to 45%	—
Storage Temperature	-20 to +60	°C

FIBER CORE DIAMETER OPTIONS

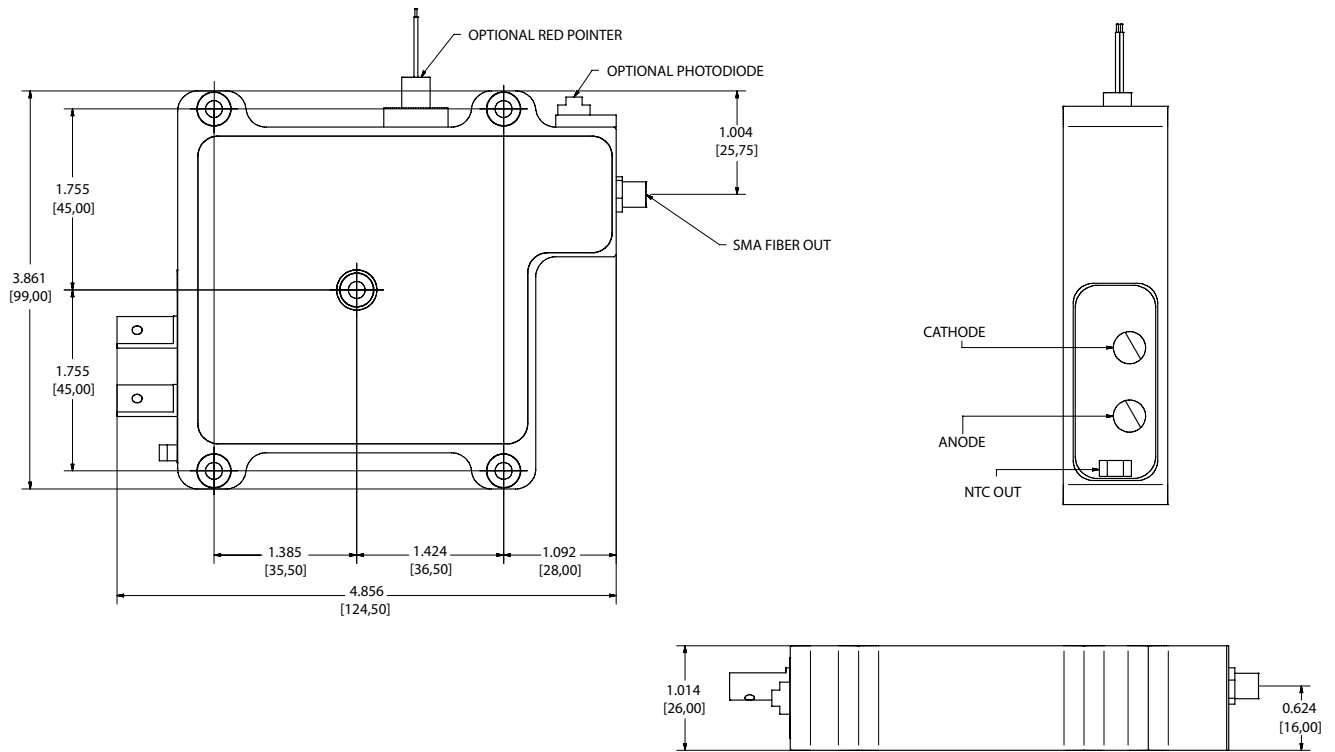
Models	Output Power	Fiber 100 µm	Fiber 200 µm	Fiber 400 µm	Fiber 600 µm
FCAXX-YYYFZ-E	50W			✓	✓
	60W			✓	✓
	70W			✓	✓
	75W			✓	✓
	80W			✓	✓

XX = Power (Watts)
 YYY = Wavelength (nm)
 Z = Fiber Diameter (x 100 microns)

> **APPLICATIONS**

Applications	790	808	915	940	976	980	1064	1340	1532
Solid State Laser Pumping	✓	✓		✓		✓			
Fiber Laser Pumping			✓		✓				
Soldering and Welding		✓		✓		✓			
Medical		✓	✓	✓		✓	✓	✓	✓
Illumination	✓	✓	✓	✓	✓		✓	✓	
Material Processing		✓	✓	✓		✓	✓		

> **MECHANICAL CHARACTERISTICS**



Copyright © 2008 Northrop Grumman Cutting Edge Optronics All Rights Reserved. Northrop Grumman Cutting Edge Optronics reserves the right to change product design and specifications at any time without notice. No license is granted by implication or otherwise under any patents or patent rights of Northrop Grumman Cutting Edge Optronics or others. No responsibility is assumed for the use of these products, nor for any infringement on the rights of others resulting from the use of these products. Information contained herein is believed to be reliable and accurate. Laser diode product components are intended for use in a user-devised end system. However, these products are capable of emitting Class IV radiation. Extreme care must be exercised during their operation. Only persons familiar with the appropriate safety precautions should operate a laser product. Directly viewing the laser beam or exposure to specular reflections must be avoided. Serious injury may result if any part of the body is exposed to the beam. The eye is extremely sensitive to the infrared radiation and therefore, proper eyewear must be worn at all times. Use of optical instruments with these products may increase eye hazard. Always wear proper eye protection when operating. This Product is covered by one or more of the following Patents: 5,898,211 | 5,985,684 | 5,913,108 | 6,310,900 | Other US and Foreign Patents Pending. Notes (1) These specifications apply for operation at 808nm. Other wavelengths available upon request. (2) A dry nitrogen environment should be provided by the user when storing and operating at temperatures below ambient dew point.

⚠ DANGER ⚠

INVISIBLE LASER RADIATION

* AVOID EYE OR SKIN EXPOSURE TO DIRECT OR SCATTERED RADIATION *

Diode laser
SW & up, 790-1560nm
CLASS IV

⚠ WARNING ⚠

ELECTROSTATIC DISCHARGE SENSITIVE DEVICE
REQUIRING SPECIAL HANDLING

Rev. A 02/08 ISO 9001:2000 Registered