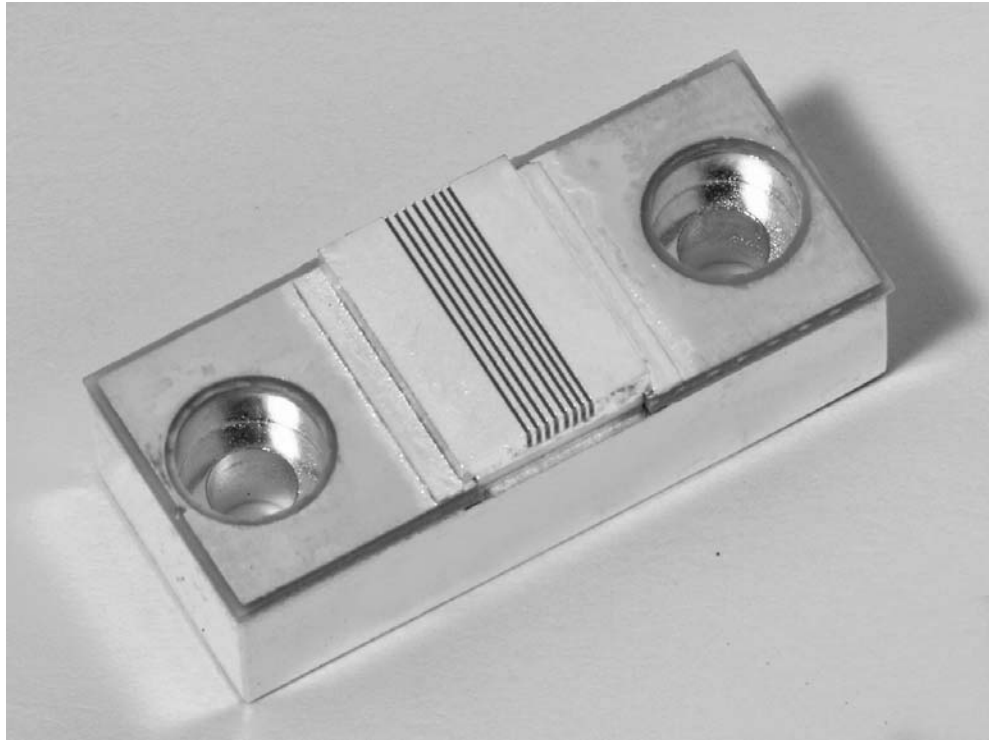


# 400W QCW Laser Diode Array

Part Number: ARR18P400

## G PACKAGE

- Packaged 8-Bar Laser Diode Array
- Available With Any Silver Bullet® Configuration
- Available Wavelengths (790-1550nm)
- Other Powers Are Also Available



## OPTICAL CHARACTERISTICS

PARAMETER	CONDITIONS	MIN	TYP	MAX	UNITS
QCW Peak Power Output	65A, 150 μsec, 250 Hz	400	---	---	W
Operating Current	400W at 25°C Heat Sink	---	55	65	A
Threshold Current	25°C Heat Sink	---	13	16	A
Center Wavelength	400W at 25°C Heat Sink	---	808	---	nm
Wavelength Tolerance	400W at 25°C Heat Sink	---	± 3	---	nm
Spectral Width FWHM	400W at 25°C Heat Sink	---	2.0	4.0	nm
Wavelength Shift	---	0.23	0.25	0.27	nm/°C
Beam Divergence FWHM	---	---	40x10	42x12	° x °

## ELECTRICAL CHARACTERISTICS

PARAMETER	CONDITIONS	MIN	TYP	MAX	UNITS
Series Resistance	25°C Heat Sink	---	0.064	0.096	ohms
Operating Voltage	25°C Heat Sink, 400W	---	16.0	18.4	V

## ABSOLUTE MAXIMUM RATINGS

PARAMETER	CONDITIONS
Forward Current	70A
Reverse Current	25μA
Reverse Voltage	3V
Operating Temperature Range <sup>(2)</sup>	-20°C to 50°C
Storage Temperature Range	-40°C to 85°C

### NOTES

- (1) These specifications apply for operations at 808nm. Other wavelengths available upon request.
- (2) A dry nitrogen environment should be provided by the user when storing and operating at temperatures below ambient dew point.

**NORTHROP GRUMMAN**  
Space Technology

Cutting Edge Optronics

20 Point West Blvd. St. Charles, MD 63301 636.916.4900 p 636.916.4994 f  
www.st.northropgrumman.com/ceolaser st-ceolaser-info@ngc.com

